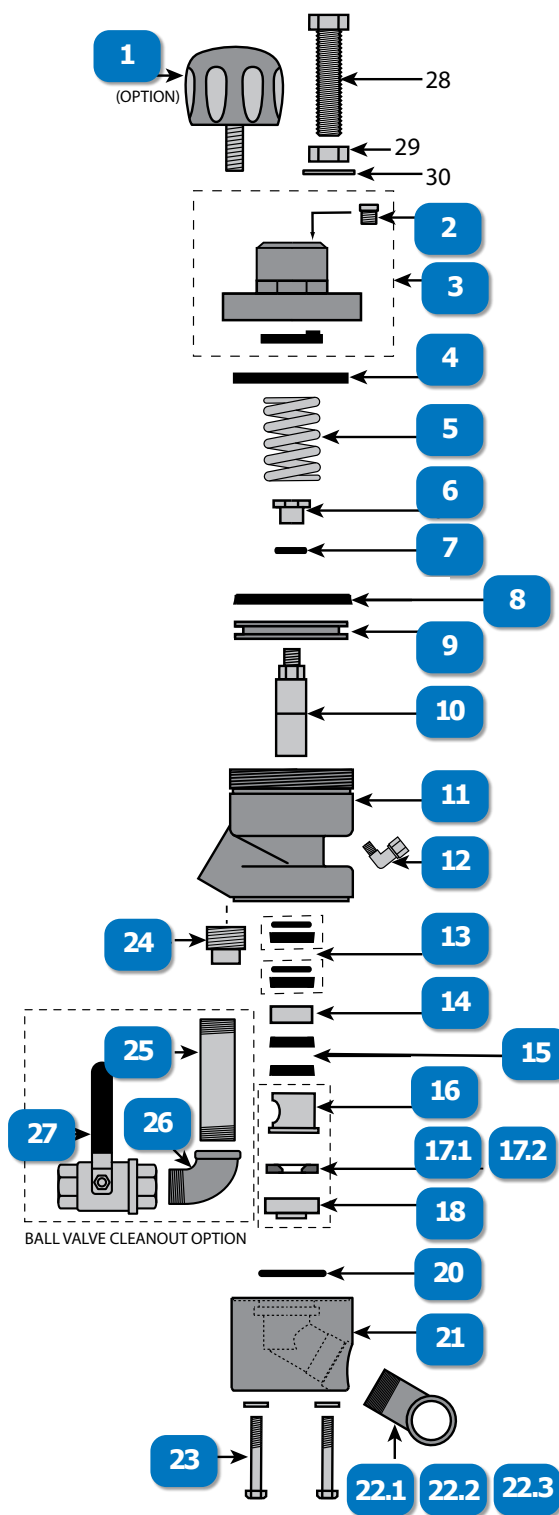


APVII STRAIGHT DOWN & SHOT-PEENER 30#

#	DESCRIPTION	PART #
	APV II STRAIGHT-DOWN METERING VALVE W/TUNGSTEN CARBIDE SLEEVE (PIPE NIPPLE NOT INCLUDED)	888-2148-307PB
	APV II, SHOT-PEENER-30#, STRAIGHT-DOWN METERING VALVE W/TUNGSTEN CARBIDE SLEEVE & SEAT	888-2148-327PB
	APV II STRAIGHT-DOWN, REPAIR KIT W/TC SLEEVE, INCLUDES # 8, 10, (2)13, (2)15, 16, 17, 18 & 20	888-2148-30099PB
	APV II STRAIGHT-DOWN, SEAL KIT, SEALS ONLY, W/ URETHANE SEAT, INCLUDES # 8, (2)13, (2)15, 17 & 20	888-2148-30098PB
	APV II, SHOT-PEENER-30#, REPAIR KIT W/TC SLEEVE & SEAT, INCLUDES # 8, 10, (2)13, (2)15, 16, 17, 18 & 20	888-2148-32799PB
	APV II, SHOT-PEENER-30#, SEAL KIT, SEALS ONLY, INCLUDES # 8, (2)13, (2)15 & 20	888-2148-32798PB
1	APV II, KNOB (BLACK PIRATE BRAND)	888-2148-00001PB
2	VENT, 1/8"	888-2014-300PB
3	APV & APV II, CAP ASSEMBLY	888-2148-00002PB
4	APV & APV II, BUMP RING	888-2149-00019PB
5	APV & APV II, SPRING	888-2149-00003PB
6	APV II, PLUNGER STOP (STAINLESS)	888-2148-00015PB
7	APV II, NYLON WASHER	888-2148-00016PB
8	APV, APV II, & T2V PISTON SEAL (GREEN URETHANE)	888-2148-00004PB
9	APV II, PISTON	888-2148-00005PB
10	APV II, PLUNGER (STAINLESS/SOLID TUNGSTEN CARBIDE)	888-2148-00007PB
11	APV II, CYLINDER, W/1" NPT CLEANOUT	888-2148-00009PB
12	SWIVEL 90*, 1/8"MNPT X 1/8"F	888-4203-50000PB
13	APV, APV II, MPV, MPV II & MPV MINI, PLUNGER SEAL W/ "O"-RING (CLEAR URETHANE)	888-2148-00006PB



#	DESCRIPTION	PART #
14	APV II, PLUNGER BUSHING (STAINLESS)	888-2148-00017PB
15	APV II, PLUNGER SEAL W/O O-RING (CLEAR URETHANE)	888-2148-30006PB
16	APV II / APV, SOLID TUNGSTEN CARBIDE SLEEVE	888-2148-00013PB
17.1	APV & APV II, URETHANE SEAT (HEAVY DUTY BLUE)	888-2149-00010PB
17.2	APV, SHOT-PEENER-30#, TUNGSTEN CARBIDE SEAT, (AVAILABLE IN REPAIR KIT ONLY)	888-2149-40710PB
18	APV II, INSERT (STAINLESS)	888-2148-00014PB
20	APV & APV II, O-RING FOR STRAIGHT-DOWN METERING VALVE INSERT	888-2149-00935PB
21	APV & APV II, BASE FOR STRAIGHT-DOWN METERING VALVES	888-2149-40711PB
22.1	APV & APV II, PIPE NIPPLE, 1" FEMALE x 1-1/2" MALE FOR STRAIGHT-DOWN & BIG-BORE™ METERING VALVES	888-2149-50616PB
22.2	APV & APV II, PIPE NIPPLE, 1-1/4" MALE x 1-1/4" MALE FOR STRAIGHT-DOWN & BIG-BORE™ METERING VALVES	888-2149-50716PB
22.3	APV & APV II, PIPE NIPPLE, 1-1/2" MALE x 1-1/2" MALE FOR STRAIGHT-DOWN & BIG-BORE™ METERING VALVES	888-2149-50816PB
23	BOLT, 3/8" UNC x 3-3/4"	888-7010-50714PB
24	APV II & MPV II, PLUG, PIPE STAINLESS 1"	888-3014-206PB
25	NIPPLE, TBE, GALV, 1" x 5"	888-3029-10625PB
26	ELBOW, STREET, 90*, GALV, 1"	888-3006-106PB
27	BALL VALVE, FULL PORT, 1" NPT, CHROME PLATED BRASS W/ NYLOCK HANDLE NUT	VB100
28	HEX BOLT, 5/8" UNC x 3-1/2"	888-7010-51512PB
29	NUT, 5/8" UNC	888-7017-515PB
30	FLAT WASHER, 5/8" UNC	888-7027-55202PB